



BÖHLER & PARTNER

CONSULTING | STRATEGY & TRANSFORMATION | IT & DIGITAL CONSULTING | MARKETING
EXECUTIVE SEARCH & INTERIM MANAGEMENT | HOSPITALITY INTELLIGENCE & OPERATIONS

For companies that do not manage the future... but shape it.

WHO WE ARE

We are not a consulting firm...

We are an
**ARCHITECTURAL STUDIO FOR FUTURE,
structure and meaning!**

We work where decisions carry weight,
where organizations must reinvent themselves, and where leadership must become leadership again.

Our purpose is not to solve problems.

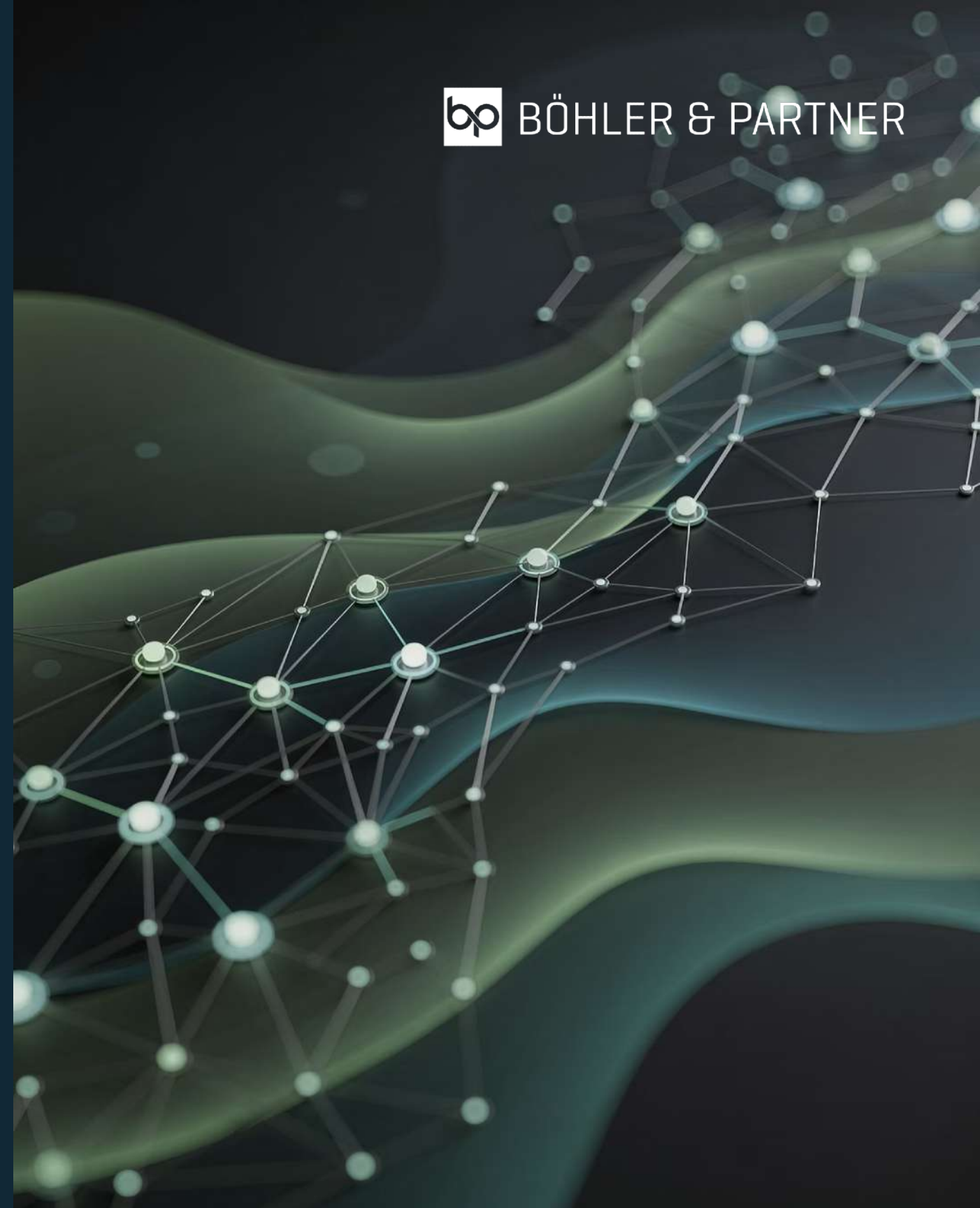
Our purpose is, **to make truth visible** and transform it into **impact**.

OUR IDENTITY

Strategic **EXCELLENCE**.
Deep **ANALYSIS**. **CLARITY** in
complexity. The courage to
DECIDE.

We unite 5 x 25+ years of leadership experience with systemic thinking, digital foresight, and a language that opens spaces rather than filling slides.

We are sparring partners, architects of outcomes,
translators of visions into concrete reality.



OUR CLIENTS

**Industrial &
Manufacturing Companies**

**Financial &
Service Organizations**

**Hospitality &
Asset-Intensive Operators**

Hidden champions

Organizations standing at turning points: transformation, growth, restructuring, digital reorientation.

**People, who choose CLARITY over Speed,
IMPACT over activity,
TRUTH over convenience.**

OUR APPROACH

We do not deliver solutions.

WE SHAPE RESULTS.

Our work begins where standard methods end
and true leadership begins.

We ask questions that change organizations.

We build structures that support decisions.

We create presence that generates impact.

OUR SERVICES

STRATEGY & TRANSFORMATION

We create strategic clarity and robust decision structures that enable execution and drive value creation.

IT & DIGITAL CONSULTING

We transform technology into a growth engine structured, scalable, and internationally connected.

EXECUTIVE SEARCH & INTERIM MANAGEMENT

We appoint leadership that delivers impact: precise, discreet, and globally anchored. Supported by our curated Executive Talent Pool of 500+ C-Level and Managing Director profiles.

MARKETING & COMMUNICATION



We build brand and positioning strategies that make leadership visible and move markets.



HOSAINT®

The Intelligence Platform for modern hospitality performance. Transparency, control, and scalability in one integrated system.



OUR PRINCIPLES

-  **We provoke** clarity and recognize patterns.
-  **We accelerate** decision-making.

-  **We ignite** momentum.
-  **We protect** organisations from insignificance.

We are not for everyone. We are for those who carry responsibility and refuse to delegate transformation.

OUR TEAM

TRANSFORMING
VISION
INTO VALUE€

AXEL BÖHLER | CEO

The navigator of complexity.
The architect of organizational truth.

Axel guides organizations through uncertainty
with a precision born of experience, calmness and analytical depth.
He creates transparency where fog prevails
and makes companies steerable when markets become unstable.

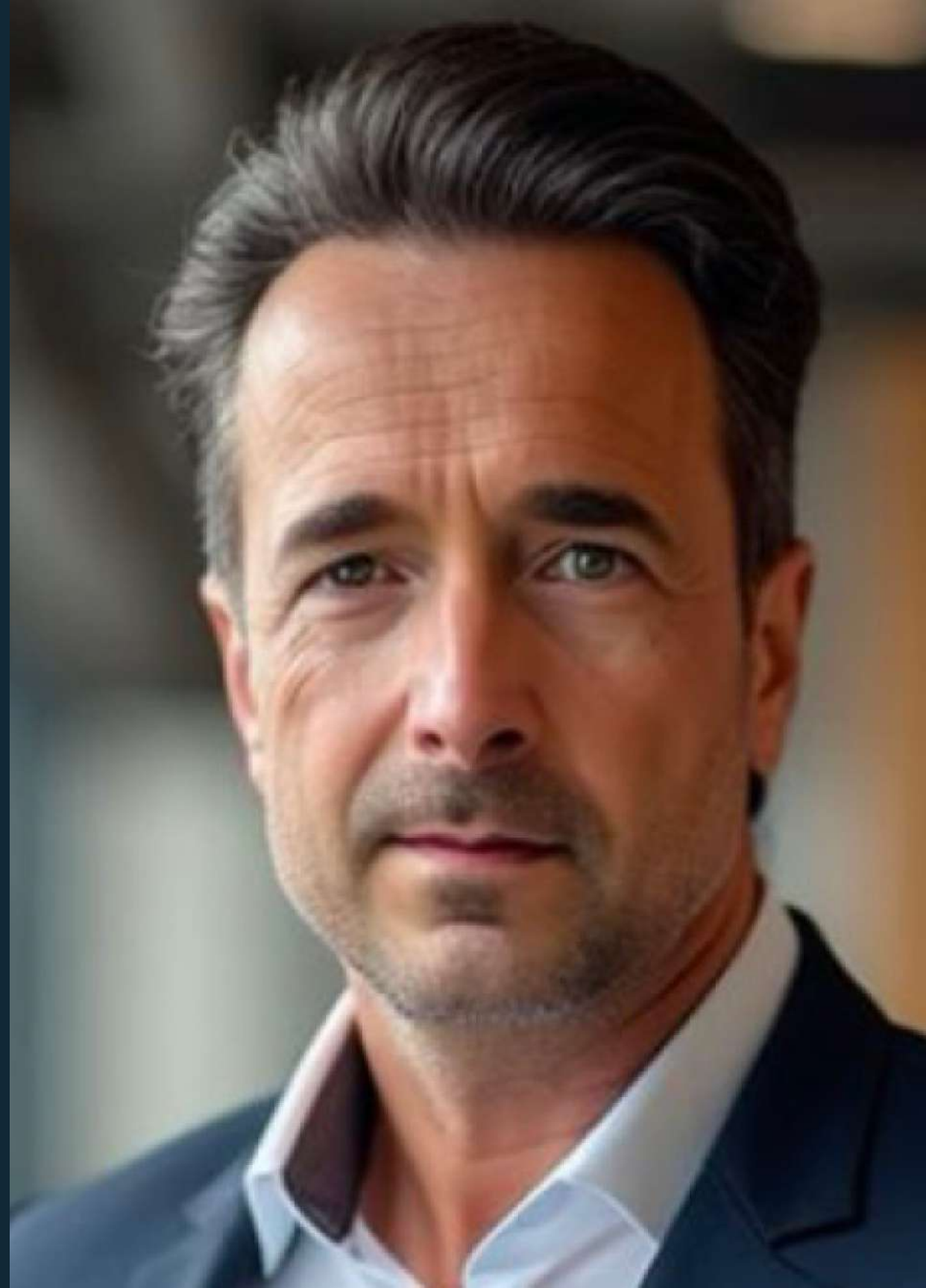


MATT KLEIN | CMO

The architect of brand, identity and meaning.
The master of presence and communication.

Matt creates brands and spaces that need no explanation,
because they are already felt.

He shapes identity, narrative, appearances and resonance...
physical, digital, emotional.





PASCAL WALZ, Senior Research Fellow | CIO

The systems thinker.
The designer of invisible infrastructure.

Pascal sees technology not as a tool but as a fundamental order.
He builds systems that carry organizations, reduce complexity
and enable digital maturity.



DR. MICHEL WALZ | CSO

The pattern-seer.
The translator of markets into models.

Michel recognizes structures before they become visible
and transforms complexity into directed movement.
His strategies are not slides, they are clear positions
in the space of possibilities.



DARNETTE ARTHURS |

Director Leadership Advisory & Executive Talent

The human anchor of leadership decisions.

Bringing calm, trust and clarity into executive conversations.

Darnette leads structured executive interviews and confidential first conversations with senior leaders. She ensures that people decisions are grounded, respectful and aligned with long-term leadership effectiveness.







OUR POWER

Our synthesis

When Finance, IT, strategy, organization and identity are **conceived from one mold**, a company emerges, that does not react but leads.



CASES

-  Transformation of international financial institutions
-  Financing architecture on a corporate level
-  Design and direction of major brand installations
-  Digital architecture for industry and mid-sized companies
-  Strategic reorganization of enterprises
-  Leadership presence programs for C-level

OUR IMPACT

What emerges when you work with us?

- **Clarity** in unclear spaces
- **Decision architecture** instead of meetings
- **Stability** in volatile markets
- **Growth models** engineered with mathematical and strategic precision
- Brands that carry **meaning**
- Teams that embody **responsibility**
- **Transformation** that endures

PARTNERSHIP

Why partner with us?

Because we do not simply complement,

WE AMPLIFY ...

... WE CREATE VALUE!

We bring new perspectives without disrupting existing structures.

We create synergies greater than the sum of competencies.

We think in systems and spaces in which future unfolds.

OUR OFFER

Together we create:

- extended market impact
- access to new client segments
- complementary expertise
- stronger project architectures
- a united voice
- more depth, more force, more presence

WHAT DRIVES US

We believe in organizations that know who they are.

We believe in leadership that prioritizes clarity over speed.

We believe in partnerships that do not explain the future.

LET'S CREATE IMPACT!



Switzerland • Germany • Spain



www.boehler-partner.de

info@boehler-partner.de