



BÖHLER & PARTNER

Consulting | Finance | Executive Search | Interim Management
Digital & Organizational Transformation | Brand & Communication

For companies that do not manage the future... but shape it.

WHO WE ARE

We are not a consulting firm...

We are an
ARCHITECTURAL STUDIO FOR FUTURE,
structure and meaning!

We work where decisions carry weight,
where organizations must reinvent themselves, and where leadership must become leadership again.

Our purpose is not to solve problems.

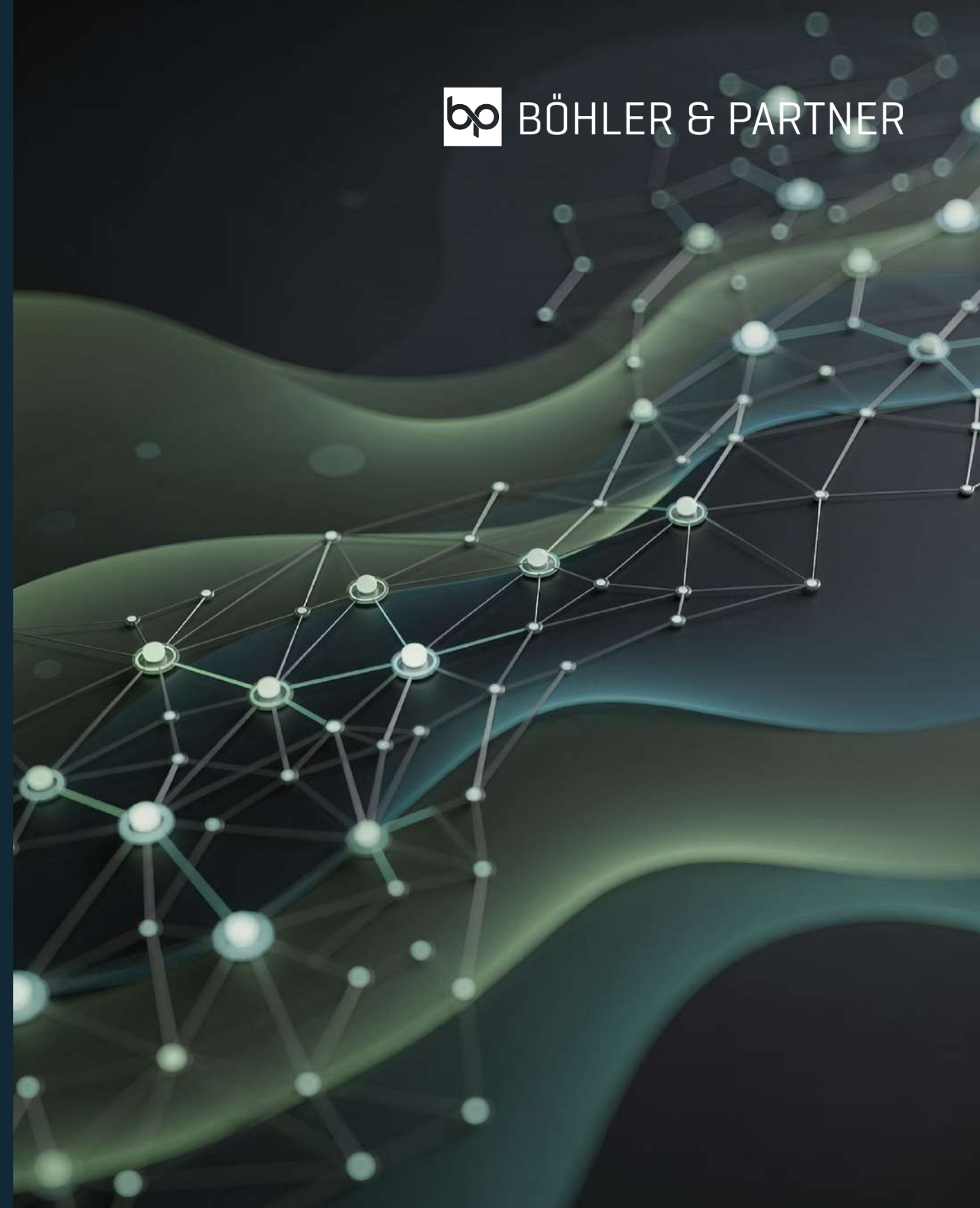
Our purpose is, **to make truth visible** and transform it into **impact**.

OUR IDENTITY

Strategic **EXCELLENCE**.
Deep **ANALYSIS**. **CLARITY** in
complexity. The courage to
DECIDE.

We unite 5 x 25+ years of leadership experience with systemic thinking, digital foresight, and a language that opens spaces rather than filling slides.

We are sparring partners, architects of outcomes,
translators of visions into concrete reality.



OUR CLIENTS

Mid-sized companies

Corporations

Financial institutions

Hidden champions

Organizations standing at turning points: transformation, growth, restructuring, digital reorientation.

**People, who choose CLARITY over Speed,
IMPACT over activity,
TRUTH over convenience.**

OUR APPROACH

We do not deliver solutions.

WE SHAPE RESULTS.

Our work begins where standard methods end
and true leadership begins.

We ask questions that change organizations.

We build structures that support decisions.

We create presence that generates impact.



OUR SERVICES

Consulting & Transformation

Strategy, organizational design,
processes, digital architecture

Executive Search & Interim Management

Filling critical leadership roles
in times of transformation

Technology & Data

Enterprise architecture, IT-strategy,
digital value creation

Finance & Capital Architecture

Financing models, liquidity, M&A,
stabilization in crises, spin-offs

Brand, Communication & Leadership Presence

Identity design, brand architecture,
narrative systems, executive presence



OUR PRINCIPLES

- **We provoke** clarity and recognize patterns.
- **We accelerate** decision-making.

- **We ignite** momentum.
- **We protect** organisations from insignificance.

We are not for everyone. We are for those who carry responsibility and refuse to delegate transformation.

OUR BOARD

Five perspectives. Five masteries. **ONE PURPOSE: TO SHAPE THE FUTURE**



AXEL BÖHLER | CEO

The navigator of complexity.
The architect of organizational truth.

Axel guides organizations through uncertainty
with a precision born of experience, calmness and analytical depth.
He creates transparency where fog prevails
and makes companies steerable when markets become unstable.

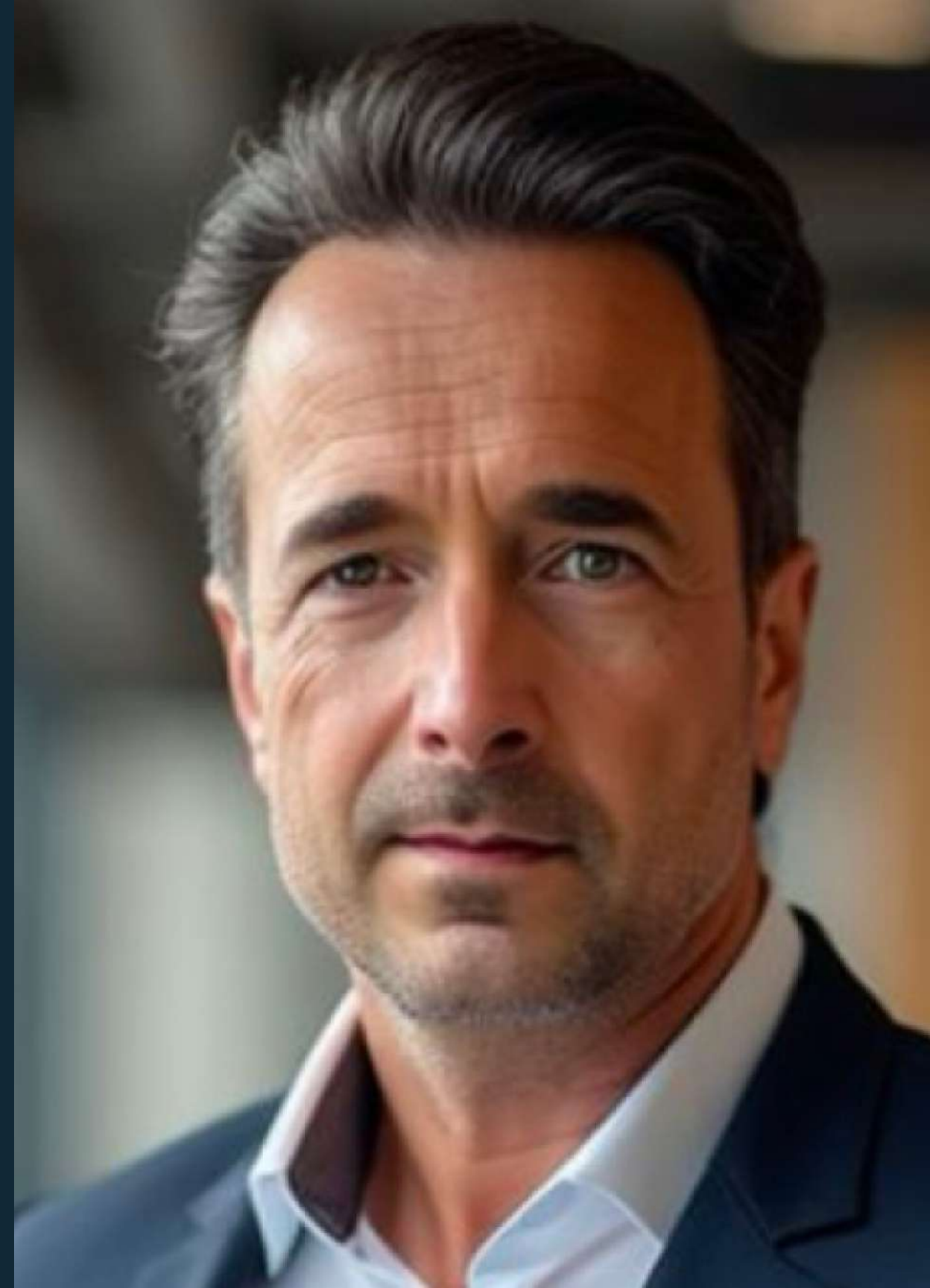


MATT KLEIN | CMO

The architect of brand, identity and meaning.
The master of presence and communication.

Matt creates brands and spaces that need no explanation,
because they are already felt.

He shapes identity, narrative, appearances and resonance...
physical, digital, emotional.



SEBASTIAN SCHLUMS | CFO

The architect of major financial decisions.
The guardian of capital, risk and stability.

Sebastian moves billions with the ease of someone who understands the language of markets and the gravity of timing. Liquidity, M&A, de-investments he constructs financial architectures that secure the future when organizations stand at decisive thresholds.

PASCAL WALZ, Senior Research Fellow | CIO

The systems thinker.
The designer of invisible infrastructure.

Pascal sees technology not as a tool but as a fundamental order.
He builds systems that carry organizations, reduce complexity
and enable digital maturity.





DR. MICHEL WALZ | CSO

The pattern-seer.
The translator of markets into models.

Michel recognizes structures before they become visible
and transforms complexity into directed movement.
His strategies are not slides, they are clear positions
in the space of possibilities.

OUR POWER

Our synthesis

When Finance, IT, strategy, organization and identity are **conceived from one mold**, a company emerges, that does not react but leads.



CASES

- Transformation of international financial institutions
- Digital architecture for industry and mid-sized companies
- Financing architecture on a corporate level
- Strategic reorganization of enterprises
- Design and direction of major brand installations
- Leadership presence programs for C-level

OUR IMPACT

What emerges when you work with us?

- **Clarity** in unclear spaces
- **Decision architecture** instead of meetings
- **Stability** in volatile markets
- **Growth models** engineered with mathematical and strategic precision
- Brands that carry **meaning**
- Teams that embody **responsibility**
- **Transformation** that endures

PARTNERSHIP

Why partner with us?

Because we do not simply complement,

WE AMPLIFY ...

... WE CREATE VALUE!

We bring new perspectives without disrupting existing structures.

We create synergies greater than the sum of competencies.

We think in systems and spaces in which future unfolds.

OUR OFFER

Together we create:

- extended market impact
- access to new client segments
- complementary expertise
- stronger project architectures
- a united voice
- more depth, more force, more presence

WHAT DRIVES US

We believe in organizations that know who they are.

We believe in leadership that prioritizes clarity over speed.

We believe in partnerships that do not explain the future.

LET'S CREATE IMPACT!



Switzerland • Germany • Spain



www.boehler-partner.de

info@boehler-partner.de